



**Wall2Wall**  
SECURITY

# Tab



## Plug-in vehicle GPS tracker

Tab plugs directly into a vehicle's dashboard power outlet, offering immediate location and journey tracking. Business and personal journey modes help manage accurate mileage expense claims, whilst ensuring personal journeys remain that way.

**Designed for:** Company Cars and Grey Fleet Vehicles

### Benefits

- ✓ Get location updates and journey maps using the online dashboard
- ✓ Get a live view of when and where business journeys are happening
- ✓ Automate the collection of business mileage and prevent false mileage claims
- ✓ No installation costs, simply plug in and go
- ✓ Private mode for personal journeys
- ✓ Automated crash detection
- ✓ Full driver behaviour reporting

### Overview

The need to know where company vehicles are, and the need to accurately report their mileage, are essential to any business with company cars or grey fleet vehicles. Tab was designed to make this simple, with 60-second journey updates, delivered straight to the online dashboard.

Tab simply plugs in to the 12v power outlet and begins delivering journey data inside a minute. For personal journeys, private mode ensures they stay personal, by stopping data transmissions.

### Contact us today to find out more

Call: 0330 0568 844 Email: [sales@wall2wallsecurity.co.uk](mailto:sales@wall2wallsecurity.co.uk)

Web: [wall2wallsecurity.co.uk](http://wall2wallsecurity.co.uk)



**Wall2Wall**  
SECURITY

## MODULE

<b>Technology</b>	GSM/GPRS/GNSS/BLE/BT
<b>GNSS</b>	
<b>GNSS</b>	GPS, GLONASS, GALILEO, BEIDOU, SBAS, QZSS, DGPS, AGPS
<b>Receiver Tracking sensitivity</b>	33 channel -165 dBm
<b>Position accuracy</b>	< 2.5 CEP
<b>Velocity accuracy</b>	< 0.1m/s (within +/- 15% error)
<b>Hot start Warm start Cold start</b>	< 1 s < 25 s < 35 s

## CELLULAR

<b>Technology</b>	GSM
<b>2G bands</b>	Quad-band 850 / 900 / 1800 / 1900 MHz
<b>Data transfer</b>	GPRS Multi-Slot Class 12(up to 240 kbps) SMS (text/data)

## POWER support

<b>Input voltage range</b>	10 - 30 V DC with overvoltage protection
<b>Back-up battery</b>	170 mAh Li-Ion battery 3.7 V (0.63 Wh)

## BLUETOOTH

<b>Specification</b>	4.0 + LE
<b>Supported peripherals</b>	Temperature and humidity sensor, hands-free headset, Inateck Barcode Scanner, Universal BLE sensors support

## PHYSICAL SPECIFICATION

<b>Dimensions</b>	96,7 x 33,4 x 27,5 mm (L x W x H)
-------------------	-----------------------------------

## INTERFACE

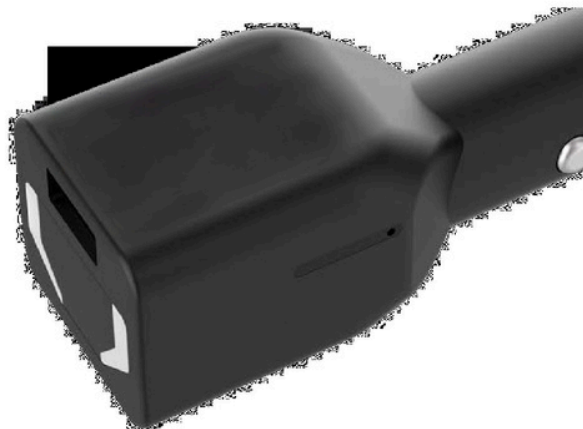
<b>Connection</b>	Cigarette lighter socket
<b>Configurable buttons</b>	1
<b>GNSS antenna</b>	Internal High Gain
<b>Cellular antenna</b>	Internal GSM High Gain
<b>USB</b>	1 x USB 2.0 Micro-USB for configuration 1 x USB type A for external device charging (5V 1A)
<b>LED indication</b>	RGB LED
<b>SIM</b>	Nano-SIM
<b>Memory</b>	128MB internal flash memory

## OPERATING ENVIRONMENT

<b>Operating temperature (without battery)</b>	-40 °C to +85 °C
<b>Storage temperature (without battery)</b>	-40 °C to +85 °C
<b>Operating humidity</b>	5% to 95% non-condensing IP41
<b>Ingress protection rating</b>	0 °C to +45 °C
<b>Battery charge temperature</b>	-20 °C to +60 °C
<b>Battery discharge temperature</b>	-20 °C to +45 °C for 1 month -20 °C to +35 °C
<b>Battery storage temperature</b>	for 6 months

## FEATURES

<b>Sensors</b>	Accelerometer
<b>Scenarios</b>	Green driving, over speeding detection, jamming detection, GNSS fuel counter, excessive idling detection, unplug detection, towing detection, crash detection, auto geofence, manual geofence, trip
<b>Sleep modes</b>	GPS sleep, online deep sleep, deep sleep, ultra deep sleep
<b>SMS</b>	Configuration, events, debug
<b>GPRS commands</b>	Configuration, debug
<b>Time</b>	GPS, NITZ, NTP
<b>Synchronization</b>	
<b>Ignition detection</b>	Accelerometer, external power voltage



**Contact us today to find out more**

Call: 0330 0568 844 Email: [sales@wall2wallsecurity.co.uk](mailto:sales@wall2wallsecurity.co.uk)

Web: [wall2wallsecurity.co.uk](http://wall2wallsecurity.co.uk)