



# AX-100/200TFR



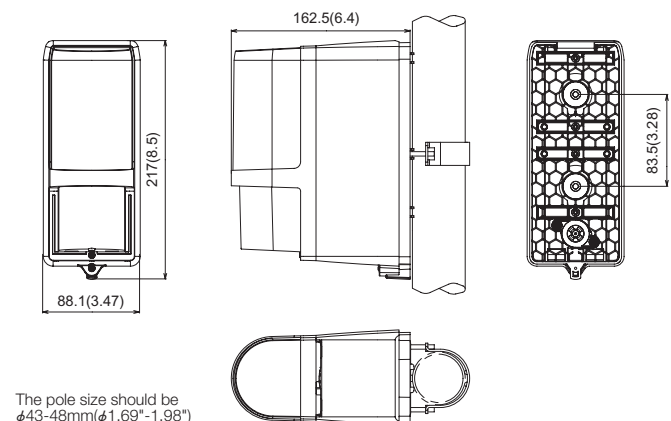
## SPECIFICATIONS

Model	AX-100TFR	AX-200TFR
Range	30m (100ft.)	60m(200ft.)
Maximum arrival distance	265m (870ft.)	530m (1,740ft.)
Detection method	Infrared beam interruption detection	
Beam frequency selection	4 channel	
Interruption period	Variable between 50, 100, 250, 500msec (4 steps)	
Power Source	3.6V 13.0Ah : LSH20 lithium batteries manufactured by SAFT(not included) Transmitter : 2 units Receiver : 2 units	
Current draw	620μA T:300μA + R:320μA (at 25°C,3.6VDC)	810μA T:490μA + R:320μA (at 25°C,3.6VDC)
*Battery life	Transmitter Receiver	5 years 5 years
Output	Alarm output	Form C-Solid State Switch : 3.6 VDC, 0.01A
	Alarm period	2 sec (± 1) nominal
	D.Q. output	Form A/B-Solid State Switch : 3.6 VDC, 0.01A
	Low battery output	Form A/B-Solid State Switch : 3.6 VDC, 0.01A (Transmitter & Receiver)
	Tamper output for Front cover	Form C : 3.6VDC, 0.01A activates when cover removed. (Receiver only)
Indicator	Tamper output for Back box	Form C : 3.6VDC, 0.01A activates when either back box or chassis is removed from the installment.
	Alarm Indicator (Receiver)	(1) Light on - IR Beam not received. (2) Flickering Light - IR Beams not received sufficiently. (3) Light off - IR Beams received.
	Power (Transmitter)	Power ON : ON, Power OFF : OFF
	Low battery	Voltage Reduction : flicker
Operating temperature	-20°C – +60°C(-4°F – +140°F)	
Operating ambient humidity	95%(Max.)	
Alignment angle	± 90° Horizontal, ± 5° Vertical	
Mounting	Indoor/Outdoor, Wall/Pole/Tower mounting (Optional main unit mounting brackets are required, when the units mount in the tower.)	
Weight	1600g (56.5oz) (Total weight of transmitter + receiver,excluding accessories)	
International protection	IP55	

Specifications and design are subject to change without prior notice.

\* The value is based on the condition that it is used within the ambient temperature range of 20 to 25°C.

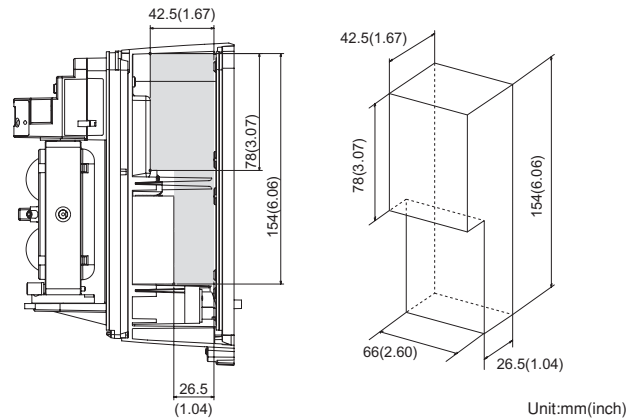
## DIMENSIONS



The pole size should be  
φ43-48mm(φ1.69"-1.98")

## SPACIOUS BACK BOX

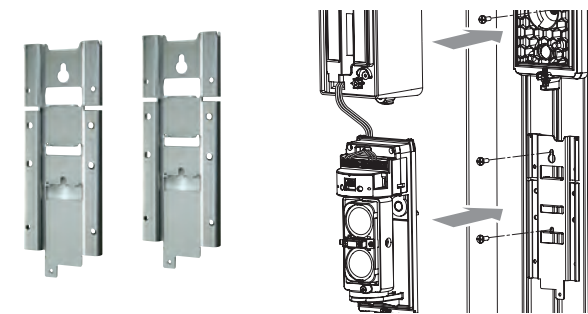
The following figure shows the dimensions of the wireless transmitter installation space in the back box. Note that transmitters with dimensions greater than those are not applicable.



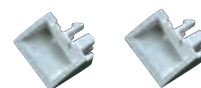
## OPTIONS

**MP-4** : Main unit mounting bracket set (for tower mounting)

Main unit mounting bracket



Tamper Bushing



Without the tamper busing, the LEDs are kept ON,which consumes more battery power.

NOTE:

These units are designed to detect an intruder and activate an alarm control panel. Being only a part of a complete system, we cannot accept responsibility for any damages or other consequences resulting from an intrusion.These products conform to the EMC Directive 2004/108/EC.



**OPTEX CO., LTD.** (ISO 9001 Certified / ISO14001 Certified)

5-8-12 Ogino, Otsu, Shiga, 520-0101 Japan

TEL +81(0)77 579 8670 FAX +81(0)77 579 8190

OPTEX INCORPORATED (USA)

OPTEX (EUROPE) LTD. (UK)

OPTEX SECURITY SAS (FRANCE)

OPTEX KOREA CO., LTD. (KOREA)

OPTEX SECURITY Sp. z o.o. (POLAND)

OPTEX (DONGGUAN) CO., LTD.

Shenzhen office (CHINA)

<http://www.optex.co.jp/e/>

<http://www.optexamerica.com/>

<http://www.optex-europe.com/>

(ISO9001 Certified)

<http://www.optex-security.com/>

<http://www.optexkorea.com/>

<http://www.optex.com.pl/>

<http://www.optexchina.com/>

No. 75116-00-15747-0904

**Save Time,  
Save Energy.  
"GO WIRELESS"**



The World Leader  
in Sensors  
for 30 years



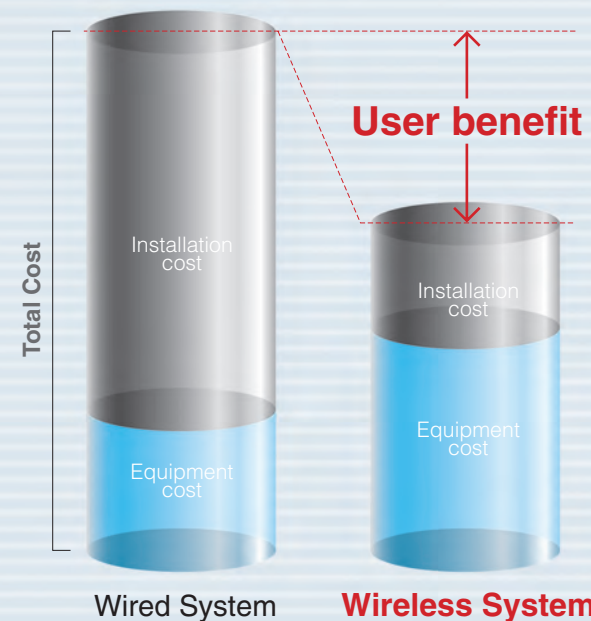




**The AX-100/200TFR is a REVOLUTION in the perimeter security industry, offering a significant cost saving alternative to a traditional hardwired system.**

### Advantage of Wireless Photoelectric Detector

#### 1 Low installation costs



#### 2 Quick & easy installation

#### 3 Flexible location

#### 4 Wireless stylish design

#### 5 Free from lightning damage

#### 6 Compatible with numerous wireless transmitters

### Various mounting patterns

Wall mount



Pole mount (single detector)



Pole mount (two detectors)



Beam tower



Optional bracket(MP-4) required

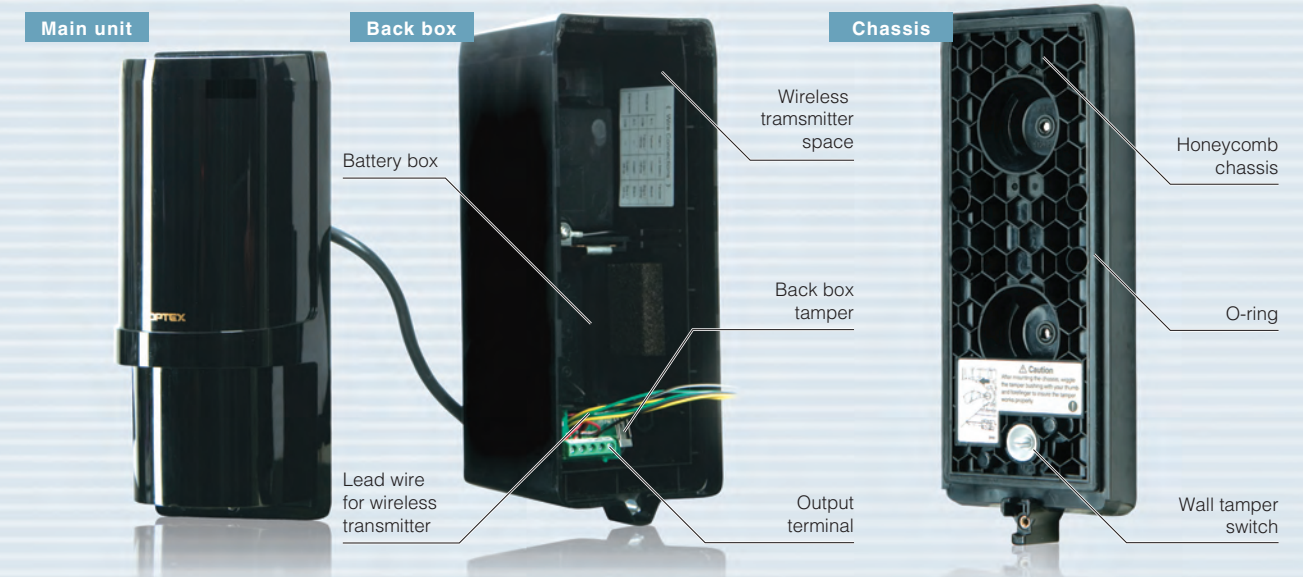
### New features

#### Long battery life

● AX-100TFR(30m) : Approx. **5 years**    ● AX-200TFR(60m) : Approx. **3 years**

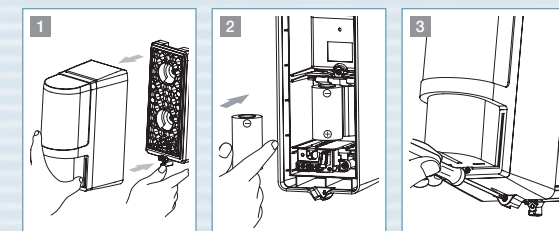
\*Use four LSH20 (3.6V, 13Ah) batteries manufactured by SAFT(not included).  
\*\*Battery life of AX-200TFR receiver is approximately 5 years.

#### Multi functional back box



#### Easy battery replacement

It allows you to easily replace the batteries without opening the front cover. Not necessary to do the optical alignment.



#### Triple tamper functions

Form C output activates when either cover or back box as well as chassis is removed.



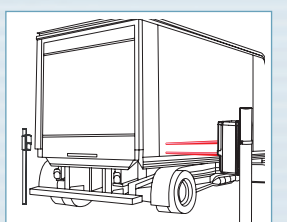
#### Low battery output and LED

The unit automatically outputs when the battery power becomes low.  
\*To monitor the low battery signal, another wireless transmitter is required.  
Low battery LED will flicker when a front cover is removed.



#### Intermittent output function

Alarm Signals are sent periodically to avoid missed alarm while the beam is broken. Its function is effective for wireless systems which do not recognize "Restore" status.



#### Battery saving timer

Alarm output activation are limited by a timer to 2 minutes. Even if there are continuous alarm events, the alarm output operates only once in the timer period. It prolongs the battery life of a wireless transmitter.

### Basic performance

- 99% Beam blocking stability
- 4 selectable beam frequencies
- D.Q.circuit (enviromental disqualification)
- N.C./N.O. output selection switch
- A.G.C. circuit
- International protection IP55
- Beam interruption adjustment function
- High grade aspherical lens
- Easy angle adjustment function